



# UMIX1008<sup>SATELLITE</sup>

a u d i o i n t e r f a c e





24-Bit 96/192KHz 10-In/8-Out USB  
Recording Interface



User manual



N1630

 <p><b>CAUTION</b></p> <p>RISK OF ELECTRIC SHOCK DO NOT OPEN RISQUE DE CHOC ELECTRIQUE NE PAS OUVRIR</p> <p>CAUTION: TO REDUCE THE RISK OF ELECTRIC SHOCK DO NOT REMOVE COVER (OR BACK) NO USER-SERVICEABLE PARTS INSIDE REFER SERVICING TO QUALIFIED PERSONNEL</p> <p>ATTENTION: POUR EVITER LES RISQUES DE CHOC ELECTRIQUE, NE PAS ENLEVER LE COUVERCLE. AUCUN ENTRETIEN DE PIECES INTERIEURES PAR L'USAGER. CONFIER L'ENTRETIEN AU PERSONNEL QUALIFIE.</p> <p>AVIS: POUR EVITER LES RISQUES D'INCENDIE OU D'ELECTROCUTION, N'EXPOSEZ PAS CET ARTICLE A LA PLUIE OU A L'HUMIDITE</p>	  	<p>The lightning flash with arrowhead symbol within an equilateral triangle is intended to alert the user to the presence of uninsulated dangerous voltage within the product's enclosure, that may be of sufficient magnitude to electric shock to persons. Le symbole clair avec point de flèche à l'intérieur d'un triangle équilatéral est utilisé pour alerter l'utilisateur de la présence à l'intérieur du coffret de voltage dangereux non isolé d'ampleur suffisante.</p> <p>exclamation point within an equilateral triangle is intended to alert the user of the presence of important operating and maintenance (servicing) instructions in the literature accompanying the appliance. Le point d'exclamation à l'intérieur d'un triangle équilatéral est employé pour alerter les utilisateurs de la présence d'instructions importantes pour le fonctionnement et l'entretien (service) dans le livret d'instruction accompagnant l'appareil.</p>
---	---	---

## Important Safety Instructions

1. Read these instructions.
2. Keep these instructions.
3. Heed all warnings.
4. Follow all instructions.
5. Do not use this apparatus near water.
6. Clean only with dry cloth.
7. Do not block any ventilation openings. Install in accordance with the manufacturer's instructions.
8. Do not install near any heat sources such as radiators, heat registers, stoves, or other apparatus (including amplifiers) that produce heat.
9. Only use attachments/accessories specified by the manufacturer.

**WARNING: To reduce the risk of fire or electric shock, do not expose this unit to rain or moisture**

# Contents

Introduction ..... 1

    What's in the package ..... 1

Features ..... 2

Front/Top Panel ..... 3

Rear Panel ..... 4

Side Panel ..... 4

Mac driver installation ..... 5-6

Software control panel (Mac) ..... 7

Windows driver installation ..... 8-10

Software Control Panel (Windows) ..... 11

Software Control Panel (Continues) ..... 12-13

Hardware Connections (Stand-alone unit) ..... 14

Hardware Connections (Use with Qcon control surface) ..... 15

Minimum System Requirements ..... 16

Specifications ..... 17

Services ..... 18

## Introduction

Thank you for purchasing the ICON Umix 1008 Satellite digital audio Interface. We sincerely trust this product will provide years of satisfactory service, but if anything is not to your complete satisfaction, we will endeavor to make things right.

In these pages, you'll find a detailed description of the features of the Umix 1008 Satellite digital audio interfaces, as well as a guided tour through their front and rear panels, step-by-step instructions for their setup and use, and full specifications.

You'll also find a warranty card enclosed---please don't forget to fill it out and mail it so that you can receive online technical support at: [www.icon-global.com](http://www.icon-global.com). And so we can send you updated information about these and other ICON products in the future. As with most electronic devices, we strongly recommend you retain the original packaging. In the unlikely event the product must be returned for servicing, the original packaging (or reasonable equivalent) is required.

With proper care and adequate air circulation, your Umix 1008 Satellite digital audio interfaces will operate without any trouble for many years. We recommend that you record your serial number in the space provided below for future reference.

Please write your serial number here for future reference:

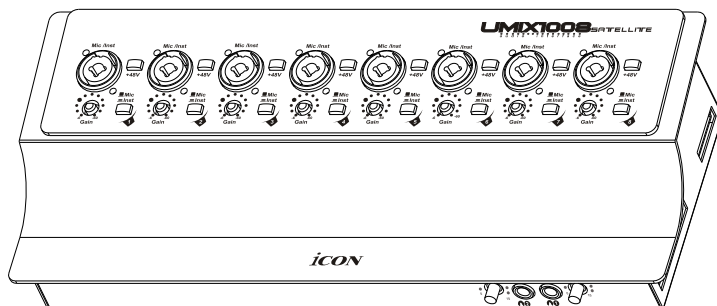
Purchased at:

Date of purchase:

## What's in the package?

- Umix 1008 Satellite USB Recording Interface
- Quick Start Guide x 1
- Software CD (Driver/User Manuals/QSG/DAW software) x 1
- USB cable x 1
- Qcon metal panel x 1
- 12V/3A Power adapter x 1 (optional for stand-alone unit)

## Features



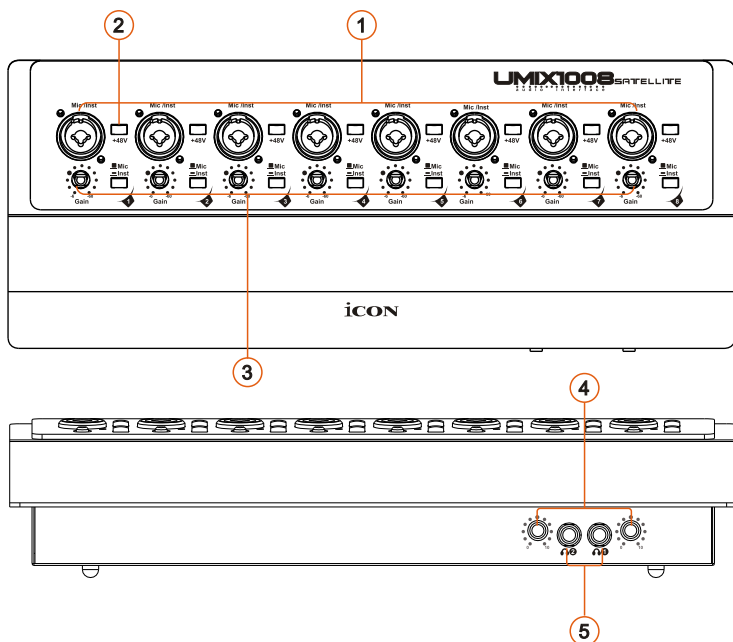
UMX1008  
SATELLITE

**The ICON Umix 1008 Satellite USB recording interface provides an audio input and output module with USB connectivity. Main features include:**

- Use as a stand-alone unit or plug-in unit to Qcon series MIDI control surface.
- 24-Bit 96/192KHz 10-In/8-Out USB Recording Interface
- 8x6 analog I/O full duplex recording and playback
- 8 x MIC/Instrument preamps with individual gain control and phantom power switch
- 8 analog balanced inputs on 1/4" TRS jacks
- 6 analog balanced outputs on 1/4" TRS jacks
- S/PDIF I/O on RCA coaxial connectors
- 1 x 1 – 16 channel MIDI I/O
- 2 headphone output with assignable source and individual volume control
- Flexible channel routing via the software control panel
- USB2.0 High Speed equipped
- Supports DirectSound, WDM and ASIO2.0
- Compatible with Mac OS (Intel-Mac) and Windows XP, Vista (32-bit/64-bit) & Windows 7 (32-bit/64-bit)
- Full duplex, simultaneous record/playback
- Rugged aluminum construction

## Front/Top Panel

UMIX1008 SATELLITE



### ① “Mic/Inst” inputs 1-8

Unbalanced instrument and balanced mic level inputs. These hybrid connectors will accept a standard 3-pin XLR plug or a 1/4" TS connector.

### ② 48V phantom power switch

Press to supply +48V phantom power to the associated XLR input. This phantom power circuit is suitable for most condenser microphones.

### ③ Input gain level controls 1-8

These potentiometers control the input level of their associated analog Mic/Inst/Line input.

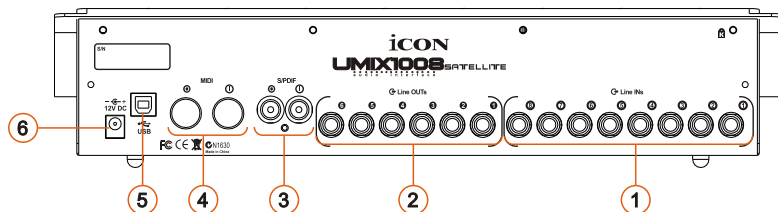
### ④ Headphone level control 1-2

These potentiometers control the output level of the associated headphone output.

### ⑤ Headphone output 1-2

These output jacks accept a standard 1/4" stereo TRS headphone connector.

## Rear Panel



### ① Line inputs 1-8

These are balanced analog inputs on standard 1/4" TS connectors at -10dB line level.

### ② Line outputs 1-6

These are balanced analog outputs on standard 1/4" TS connectors at +6dBu line level.

### ③ S/PDIF coaxial I/O connectors

S/PDIF digital input and output on coaxial RCA connectors. The digital input is selected via the Umix 1008 Satellite's software control panel, while the digital output will be sent to the coaxial.

### ④ MIDI I/O connectors

MIDI input and output on standard 5-pin DIN connectors

### ⑤ USB 2.0 Connector

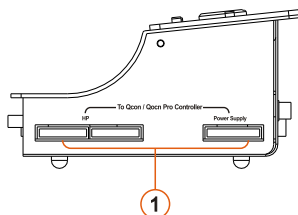
Connect it with the provided USB cable to your Mac/PC's USB connector. Your Mac/PC must have a USB2.0 connector in order to run the full speed of Umix 1008 Satellite.

### ⑥ 12V/3A power adaptor (optional)

Connect the provided power adaptor here.

**(Note: Umix 1008 Satellite is not able to work without the provided power adaptor connected. The USB bus power is not able to provide sufficient power supply for Umix 1008 Satellite.)**

## Side Panel



### ① Signal and power connectors to Qcon (As audio interface plug-in to Qcon)

Connect Qcon's corresponding cables to these connectors to provide power and signal to the Umix 1008 Satellite.

## Mac driver installation

Please follow the step-by-step procedures below to install your Umix1008 Satellite USB recording interface and its driver.

### ① Turn on your Mac

*Note: Do not connect the Umix1008 Satellite digital audio interface to your Mac yet*

### ② Insert the provided driver CD into your CD-Rom.

After you have inserted the provided Driver CD into your CD-Rom, a pop-up window should appear as shown in Diagram 1, then click on the "Mac" folder to open the installation files list. Click "ICON USB Audio.mpkg"

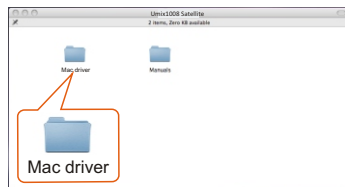


Diagram 1

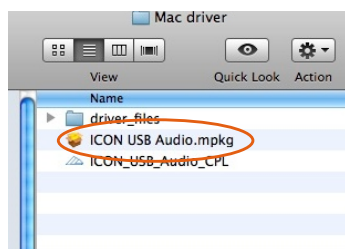


Diagram 2

### ③ Welcome Screen appears

Choose "Continue" when you see the Welcome Screen shown in Diagram 3



Diagram 3

### ④ Set install location

Click the "Change install location" button if you would like to set your preferred install location, otherwise click the "Install" button.

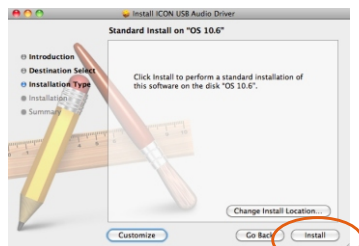


Diagram 4

### ⑤ Installation start

The driver installation has started, please wait until the process has completed.



Diagram 5



## ⑥ Installation completed

The driver installation has completed successfully. Click the “Close” button.

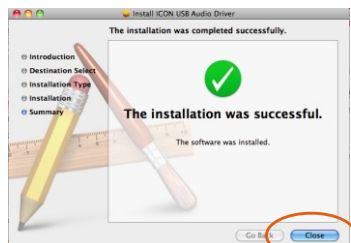


Diagram 6

## ⑦ Copy the software control panel shortcut logo to your desktop

Open the previous “Mac” folder. Copy the ‘Umix1008” software panel shortcut logo and paste it to your desktop.

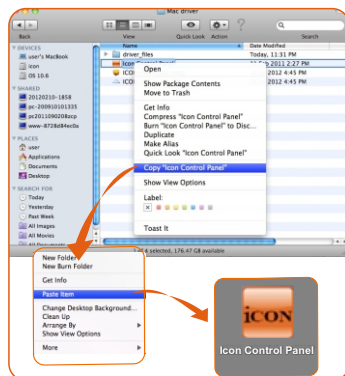


Diagram 7

## ⑧ Launch the software control panel

Click the Umix1008's software control panel shortcut logo you have just copied to your desktop to launch the software control panel.

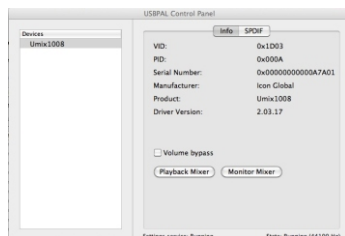


Diagram 8

## ⑨ Audio MIDI setup

Open the “Audio MIDI setup” window and check if the Umix 1008 Satellite device has setup properly as shown below in diagram 9. If your Umix 1008 Satellite device does not appear on the system settings. It means the driver did not install properly, go through the “Driver Installation” procedure again.

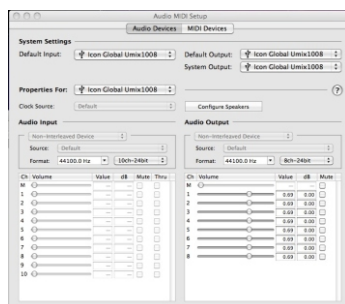
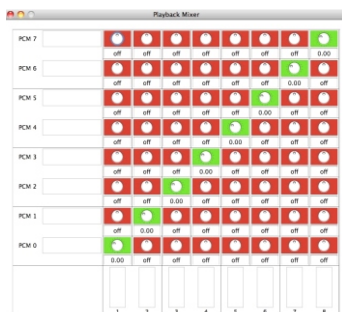


Diagram 9

# Software control panel

The “Playback” and “Monitor” mixers work like a matrix mixer. Activate and adjust the correspondence input or output channel level. They are very useful and make your inputs and outputs very flexible. You may route any of your inputs to any outputs.

## Playback Mixer



Playback Mixer

### Software outputs level metering

Ch 1-6 & S/PDIF output level metering

Showing the input level for the software input channel.

### Hardware outputs level metering

Ch 1-6 & S/PDIF output level metering

Showing the output level for the hardware output channel.

## Monitor Mixer



Monitor Mixer

### Hardware inputs level metering

Ch 1-8 & S/PDIF input level metering

Showing the input level for the hardware input channel.

### Hardware outputs level metering

Ch 1-6 & S/PDIF output level metering

Showing the output level for the hardware output channel.

# Windows driver installation

Please follow the step-by-step procedures below to install your Umix 1008 Satellite USB recording interface and its driver.

## ① Turn on your computer

**Note: Do not connect the Umix 1008 Satellite digital audio interface to your computer yet**

## ② Insert the Driver CD into your CD-Rom.

After you have inserted the provided Driver CD into your CD-Rom, an Installation screen should appear as shown in Diagram 1, then click "Windows Driver" for the driver installation"

**Note: If the Installation screen do not appear automatically. Go to the CD folder and double click "Setup"**



Diagram 1

## ③ Installation Wizard appear

Choose "Next" when you see the Welcome Screen as Diagram 2 shown

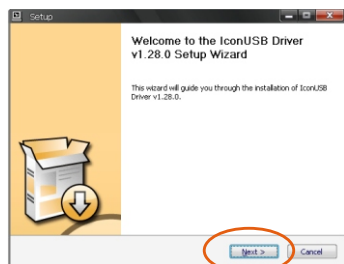


Diagram 2

## ④ License Agreement

Check mark the "I accept the terms in the License Agreement" and click "Next".

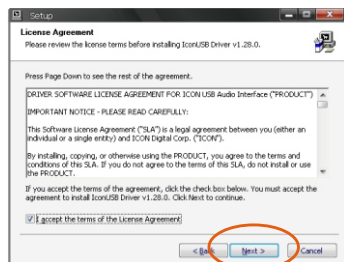


Diagram 3

## ⑤ Confirm driver installation

A confirmation on the driver installation screen will appear, click "Next".



Diagram 4

# Windows driver installation

## ⑥ Driver setup

Choose the location of the driver and click "Next" as shown in Diagram 5

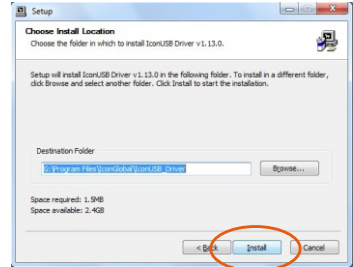


Diagram 5

## ⑦ Installation start

The installation process has started, the process may take some time depending on your computer performance, please be patient and wait for the process to finish.

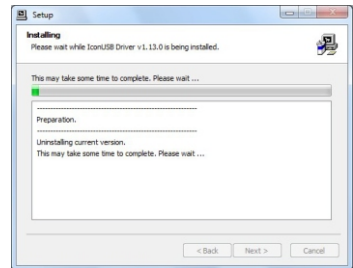


Diagram 6

## ⑧ Software installation window

A window as shown in Diagram 7 should appear. Choose "Install this driver software anyway"

**Note:** Although this message appears, the Umix 1008 Satellite driver is fully tested and supports Windows XP, Vista & Windows 7



Diagram 7

## ⑨ Setup completed

A window as shown in Diagram 8 should appear. Choose "Next".

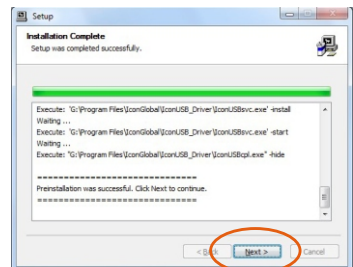


Diagram 8

## Windows driver installation

### ⑩ Connect your Umix 1008 Satellite digital audio interface

Now connect the Umix 1008 Satellite digital audio interface to your computer's USB port and click "Finish".

**Note:** Umix 1008 Satellite audio interfaces only support USB 2.0. Your computer must have an USB2.0 port.

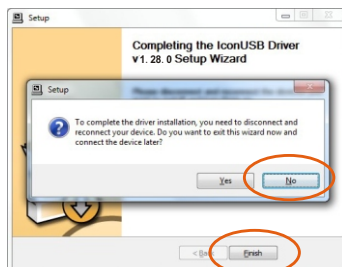


Diagram 9

### ⑪ Installing device driver software

The Umix 1008 Satellite driver is installing



Diagram 10

### ⑫ Driver installation completed

Umix 1008 Satellite driver installation has completed and is ready to use.



Diagram 11

### ⑬ Launch the software control panel

You may click the Umix1008 logo on the system tray to launch the software control panel (Page 11).

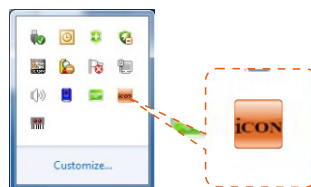


Diagram 12

Note: For the latest driver updates please check [www.icon-global.com](http://www.icon-global.com)

## Software Control Panel

### Sample rate settings

Select your desired sampling rate from 44.1KHz to 192KHz on the pull down window shown on Diagram 1. Click "Apply" after the selection has been made to set the value.

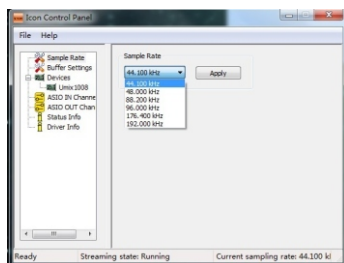


Diagram 1

### Buffer Size settings

You may select the buffer size for "Streaming" and "ASIO". Click "Apply" after you have made the selections. *(Note: If a clicking sound occurs, you should change to a larger buffer size for the settings. If the largest buffer size has been selected and there is still a clicking sound. It means your computer performance is not able to handle the task. (It is not caused by the Umix 1008 Satellite digital audio interface))*

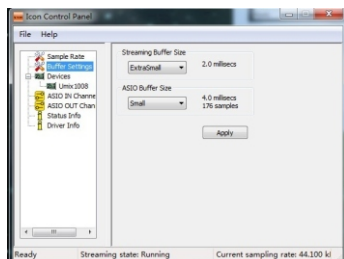


Diagram 2

### Device settings

Shows the serial number & product ID of your Umix 1008 Satellite device. If it doesn't show, it means your device is not properly installed. Please go through the "Driver Installation" process again (Page 8).

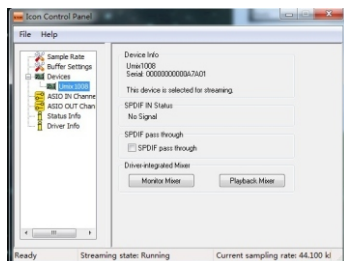


Diagram 3

### Monitor Mixer

Click this button to launch the "Monitor Mixer" (Page 12)

### Playback Mixer

Click this button to launch the "Playback Mixer" (Page 13)

### S/PDIF Status and Pass Through

Showing the S/PDIF device signal status.

### S/PDIF Pass Through

"Tick" the box if you want S/PDIF signal pass through

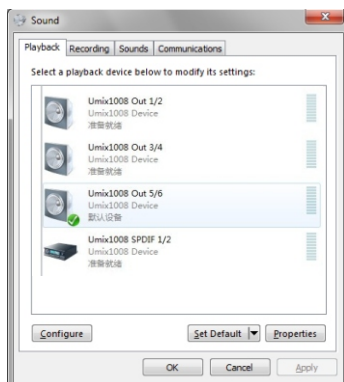
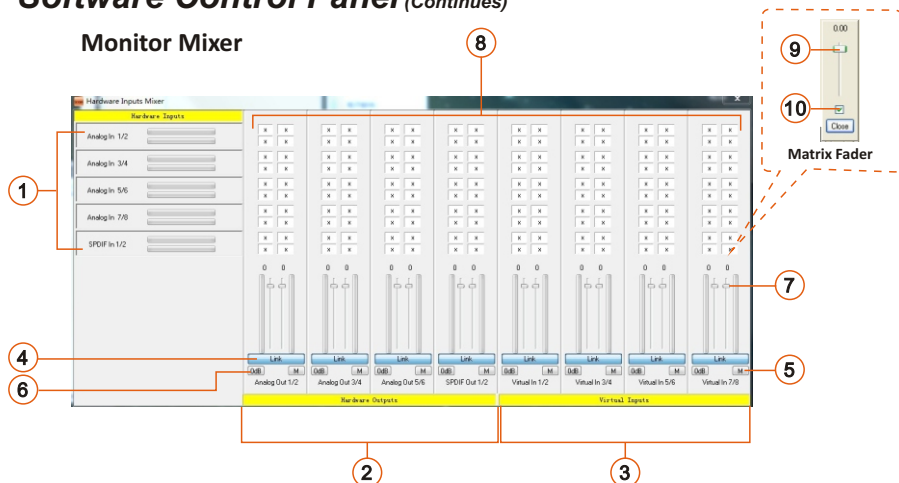


Diagram 4

## Software Control Panel (Continues)

### Monitor Mixer



- ① **Hardware inputs level metering**  
Ch 1-8 & S/PDIF input level metering  
Showing the input level for the hardware input channel.
- ② **Hardware outputs level metering**  
Ch 1-6 & S/PDIF output level metering  
Showing the output level for the hardware output channel.
- ③ **Virtual inputs level metering**  
Virtual1-8 input level metering  
Showing the input level for the virtual input channel.
- ④ **Link switch**  
Switch to adjust both channels level simultaneously.
- ⑤ **Mute switch**  
Switch to mute the corresponding channel.
- ⑥ **"0dB" switch**  
Switch to instantly adjust the corresponding channel to "0dB" level.
- ⑦ **Gain control fader**  
Slide to adjust the gain level for the corresponding channel.
- ⑧ **Inputs & Outputs Matrix switches**  
Switch to turn On/Off the corresponding hardware input channel route to the corresponding hardware output channel. The matrix is very useful and makes your inputs and outputs very flexible. You may route any of your input(s) to any output(s).
- ⑨ **Inputs & Outputs Matrix Mixer**  
"Tick" the box to activate the mixer.
- ⑩ **Inputs & Outputs Matrix Mixer Gain Control**  
Adjust the gain for the corresponding hardware channel.  
After finishing the adjustment, click "Close" to close the window.

## Playback Mixer



- ① **Software outputs level metering**  
Ch 1-6 & S/PDIF output level metering  
Showing the input level for the software input channel.
- ② **Hardware outputs level metering**  
Ch 1-6 & S/PDIF output level metering  
Showing the output level for the hardware output channel.
- ③ **Virtual inputs level metering**  
Virtual1-8 input level metering  
Showing the input level for the virtual input channel.
- ④ **Link switch**  
Switch to adjust both channels level simultaneously.
- ⑤ **Mute switch**  
Switch to mute the corresponding channel.
- ⑥ **"0dB" switch**  
Switch to instantly adjust the corresponding channel to "0dB" level.
- ⑦ **Gain control fader**  
Slide to adjust the gain level for the corresponding channel.
- ⑧ **Inputs & Outputs Matrix switches**  
Switch to turn On/Off the corresponding hardware input channel route to the corresponding hardware output channel. The matrix is very useful and makes your inputs and outputs very flexible. You may route any of your input(s) to any output(s).
- ⑨ **Inputs & Outputs Matrix Mixer**  
"Tick" the box to activate the mixer.
- ⑩ **Inputs & Outputs Matrix Mixer Gain Control**  
Adjust the gain for the corresponding hardware channel.  
After finishing the adjustment, click "Close" to close the window.



## Hardware Connections (Stand-alone unit)

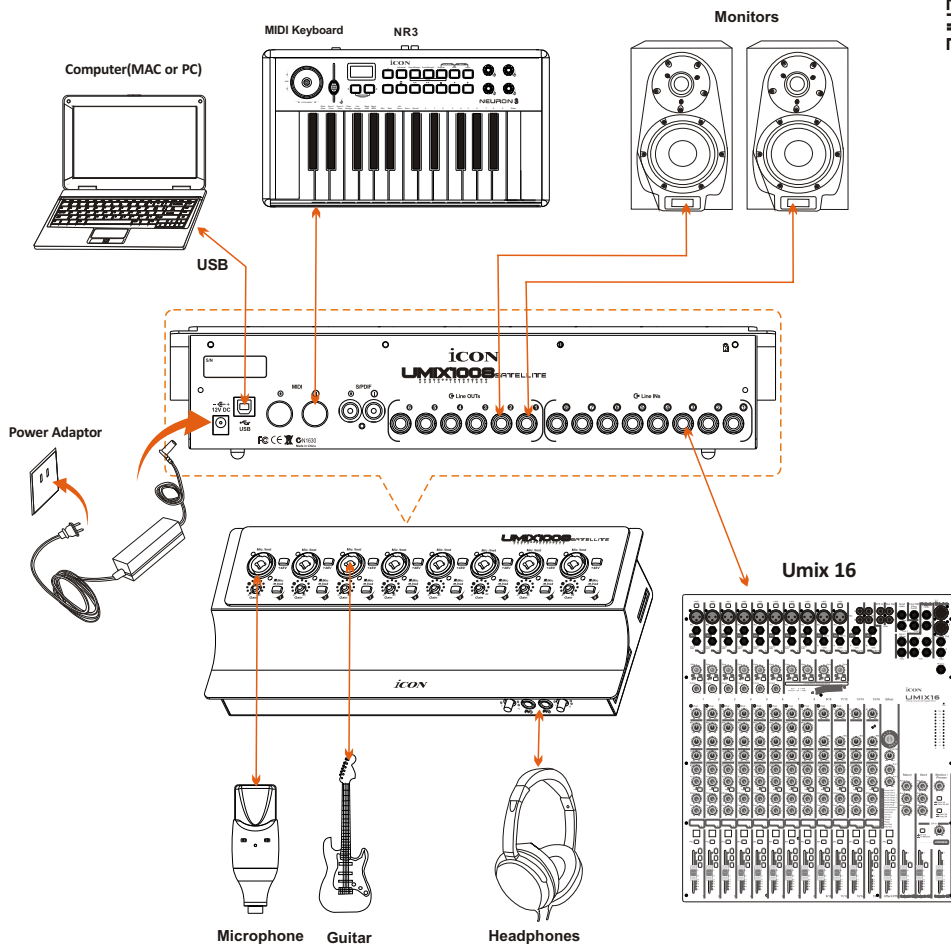
Connect the Umix 1008 satellite digital audio interface outputs to your amplifier, powered monitors or surround system. Two-channel stereo operation, the default outputs are channels 1 and 2.

If you are monitoring through headphones, connect your headphones to the device's headphone output.

Connect your microphones, instruments or other line level analog sources to the device's analog inputs.

Connect your S/PDIF digital devices to the coaxial digital I/O and MIDI device to the MIDI I/O.

### Connections



## Hardware Connections (Use with Qcon control surface)

Remove the Qcon's rear panel. Connect the two separate cables to the Umix 1008 Satellite connectors located on its side panel. Install the supplied extra back panel to the Umix 1008 Satellite and install the whole unit back to Qcon's rear slot.

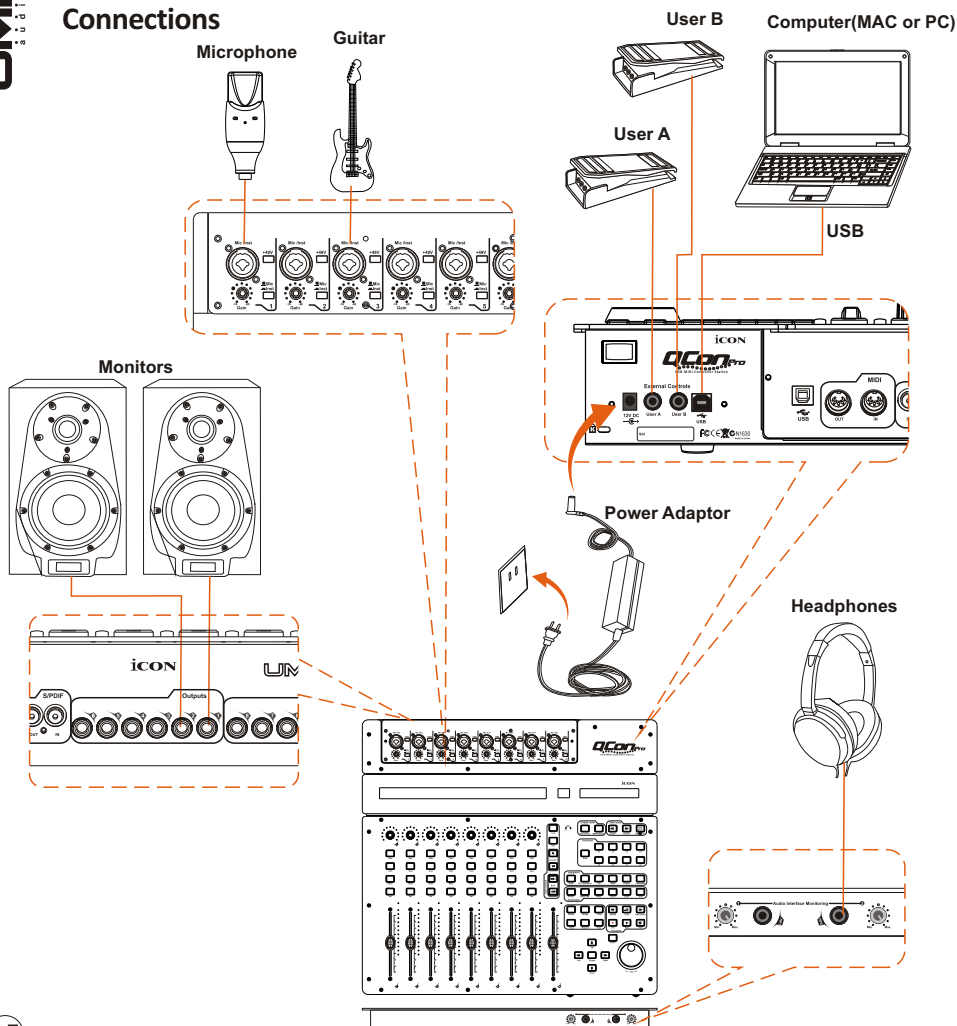
Connect the Umix 1008 satellite digital audio interface outputs to your amplifier, powered monitors or surround system. Two-channel stereo operation, the default outputs are channels 1 and 2.

If you are monitoring through headphones, connect your headphones to the Qcon's headphone output.

Connect your microphones, instruments or other line level analog sources to the device's analog inputs.

Connect your S/PDIF digital devices to the coaxial digital I/O and MIDI device to the MIDI I/O.

### Connections



## Minimum System Requirements

**Important:** The Umix 1008 Satellite digital audio interface is supported by Mac OS (Intel-Mac), Windows XP, Windows Vista and Windows 7 (32-bit/64-bit). The Umix 1008 Satellite digital audio interface is not supported by Windows 98 or Windows Me. For Windows XP, you must be running SP1 or later. Visit the Windows update web pages to make sure you have the most current updates and fixes supplied by Microsoft. On the Mac, the Umix 1008 Satellite digital audio interface is supported by Mac OSX version 10.5.5 or later (must be Intel-Mac). Earlier versions of Mac operating systems are not supported.

### **Windows OP:**

Pentium 4 -1.0GHz or higher

1.0Ghz RAM

DirectX 8.1 or higher

Windows XP (SP1), Windows 2000 (SP3),

Windows Vista or Windows 7

### **Mac OP:**

Intel-Mac 1.0GHz or higher

1.0GHz RAM

OS 10.5.5 or later

## Specifications

Weight:	1.9kg (4.2lb)
Dimensions:	360(L) X 149(W) X 72(H)
	14.2"(L) x 5.9"(W) x 2.8"(H)

### Mic/Inst 1-8 Inputs (Balanced; at Minimum Gain):

Frequency Response: 22Hz to 22kHz (+/-0.1dB)  
 Dynamic Range: 100dB, A-weighted  
 Signal-to-Noise Ratio: -100dB, A-weighted  
 THD+N: <0.0048% (-90dB)  
 Crosstalk: -100dB @ 1kHz  
 Input Impedance: Inst in: 390K Ohms, typical;  
 Mic in: 1.8K Ohms, typical  
 Adjustable Gain: +53dB  
 Total Gain Range: +53dB

### Line Inputs 1-8 (balanced):

Frequency Response: 22Hz to 22kHz (+/-0.1dB)  
 Dynamic Range: 100dB, A-weighted  
 Signal-to-Noise Ratio: -100dB, A-weighted  
 THD+N: <0.0048% (-90dB)  
 Crosstalk: -100dB @ 1kHz  
 Nominal Input Level: Balanced: +4dBu  
 Unbalanced: -10dBV  
 Maximum Input level: Balanced: +10.2dBu, typical;  
 Unbalanced: +2.0dBV, typical  
 Input Impedance: 10K Ohms, typical

### Line Outputs 1-6 (balanced):

Frequency Response: 22Hz to 22kHz (+/-0.1dB)  
 Dynamic Range: 102dB, A-weighted  
 Signal-to-Noise Ratio: -102dB, A-weighted  
 THD+N: <0.003% (-90 dB)  
 Crosstalk: -100dB @ 1kHz  
 Nominal Output Level: Balanced: +4dBu  
 Unbalanced: -10dBV  
 Maximum Output Level: Balanced: +10.2dBu, typical;  
 Unbalanced: +2.0dBV, typical  
 Output Impedance: 150 Ohm  
 Load Impedance: 600 Ohm minimum

### Headphone Outputs: 1 & 2 (at Maximum Volume; Into 100 Ohm load):

Frequency Response: 22Hz to 22kHz (+/-1dB)  
 Power into Ohms: 90 mW into 100 Ohms  
 THD+N: <0.06% (-66dB)  
 Signal-to-Noise Ratio: -90dB, A-weighted  
 Max Output Level into 100 Ohms: +2.0dBV, typical  
 Output Impedance: 75 Ohm  
 Load Impedance: 32 to 600 Ohms

## Services

If your Umix 1008 Satellite audio interface needs servicing, follow these instructions.

1. Ensure the problem is not related to operation error or external system devices.
2. Keep this owner's manual. We don't need it to repair the unit.
3. Pack the unit in its original packaging including end card and box. This is very important. If you have lost the packaging, please make sure you have packed the unit properly. ICON is not responsible for any damage that occurs due to non-factory packing.
4. Ship to the ICON tech support center or the local return authorization.

### U.S. OFFICE:

ICON Digital Corporation  
8001 Terrace Ave., Suite 201  
Middleton, WI, 53562  
USA

### ASIA OFFICE:

ICON (Asia) Corp.  
Unit 807-810, 8/F., Sunley Centre,  
No. 9 Wing Yin Street, Kwai Chung, NT.,  
Hong Kong.

5. For additional update information please visit our website at:  
**[www.icon-global.com](http://www.icon-global.com)**



iCON®

[www.icon-global.com](http://www.icon-global.com)

[info@icon-global.com](mailto:info@icon-global.com)

